



CLAIBORNE

AT SUMMERLY



CLAIBORNE

AT SUMMERLY



Home is looking more like vacation all the time.



Welcome to Claiborne at Summerly. Come and discover just how great life can be. At Claiborne you will find spacious homes in floorplan designs that are beyond your wildest dreams. There is space for your growing family, rooms to make your own, easy-living first floor master suites, welcoming guest suites, and California Rooms that transition the comfort of home to the outdoors. And outdoors is where you'll want to be in this resort-like master-planned community, making friends with your new neighbors and enjoying the active lifestyle only Summerly has to offer.

Experience the activities of summer vacation year-round at Summerly with an abundance of recreation right here within this welcoming master-planned community. Residents can enjoy block parties, movies in the park and so much more. The Summerly Splash is your private swim club with a pool, spa, BBQ terrace and lounge, and the Spirit and Sunshine neighborhood parks offer more BBQ areas, fire pits for evening gatherings and roasting marshmallows, a splash pad, tot lot, playground, and plenty of open lawns for play. The future 24-acre Summerly Community Park will feature a dog park, baseball and soccer fields, basketball and tennis courts, and even a skate park. Just beyond Summerly is the Storm Stadium, where your family can enjoy minor league baseball games, shopping at the nearby Lake Elsinore Outlets, and participate in a multitude of water recreation opportunities available on and around Lake Elsinore.

Come and experience life at its best at Claiborne at Summerly, where home is looking more like vacation all the time!



WHY VAN DAELE?

Van Daele Homes is a family-owned company that builds for YOUR Street, not Wall Street. Unlike most others, we are not a publicly-owned conglomerate answering to stockholders. YOU are our stockholder. We answer to YOU. This is just one of the many reasons the Building Industry Association of Southern California has honored us as BUILDER OF THE YEAR.

OUR FOUR POINT PLEDGE TO YOU

1. OUR SALES PHILOSOPHY: Van Daele Sales Counselors are here to counsel you and to help you in any way they can. They are seasoned professionals who are committed to looking out for your best interests. They will answer all your questions, assist you with all your needs, and they will make sure you'll feel good about your new home. Our Sales Counselors consistently score 93% or higher on customer satisfaction surveys.

2. YOUR LOAN: We include the services of imortgage as our "Preferred Lender". They are "preferred" because of the proven service and value they bring to our home buyers. It's no wonder that imortgage has received the distinguished "Eliant Certified" customer satisfaction designation.

3. YOU'RE INCLUDED: We get you excited about your new home purchase right from the start. We involve you in the process via regular construction updates from both our sales and construction teams, and also provide you a private 'hard-hat' tour of your new home as well as two additional walk through's prior to your home's completion. We want you to know your home inside and out, and understand the intricate details of its' quality construction, safety, technology and energy efficient features.

4. VAN DAELE VALUE: We offer the best there is in location, design, quality, features, customer satisfaction and price. Generations of smart home shoppers (there are more than 15,000 Van Daele homeowners) and even our friendly competitors know and respect Van Daele.



RESIDENCE ONE

Single Story
Four Bedrooms
Three and One-Half Baths
Great Room
Dining Area
California Room
Three-Car Garage

Available Options:

- Fireplace at California Room
- Guest Suite 1 or 2 with separate Bedroom, Living Room and Kitchenette
- Great Room Fireplace
- Sliding Glass Door Selections

INTERIOR LIVING SPACE
2,338 to 2,520 square feet*

OUTDOOR LIVING SPACE
279 square feet*



1A SPANISH



1B EUROPEAN COTTAGE



1C CRAFTSMAN

RESIDENCE ONE X

Two Story
Five Bedrooms
Four and One-Half Baths
First Floor Master Suite
Great Room
Dining Area
California Room
Bonus Room
Second Floor Storage Space
Three-Car Garage

Available Options:

- Fireplace at California Room
- Guest Suite 1 or 2 with separate Bedroom, Living Room and Kitchenette
- Great Room Fireplace
- Tech Space
- Sliding Glass Door Selections

INTERIOR LIVING SPACE
3,014 to 3,196 square feet*

OUTDOOR LIVING SPACE
279 square feet*



1XA SPANISH



1XB EUROPEAN COTTAGE

MODEL



1XC CRAFTSMAN

RESIDENCE TWO

Two Story
Four to Five Bedrooms
Three to Four Baths
Covered Porch Entry
Great Room
Dining Area
California Room
Imagination Room
My Place
Bonus Room
Three-Car Tandem Garage

Available Options:

- Fireplace at California Room
- Super Great Room
- Formal Dining Room
- Guest Suite with Kitchenette
- Expanded Kitchen Island
- Bedroom Five
- Sliding Glass Door Selections

INTERIOR LIVING SPACE

2,954 to 3,212 square feet*

OUTDOOR LIVING SPACE

317 square feet*



2AR SPANISH

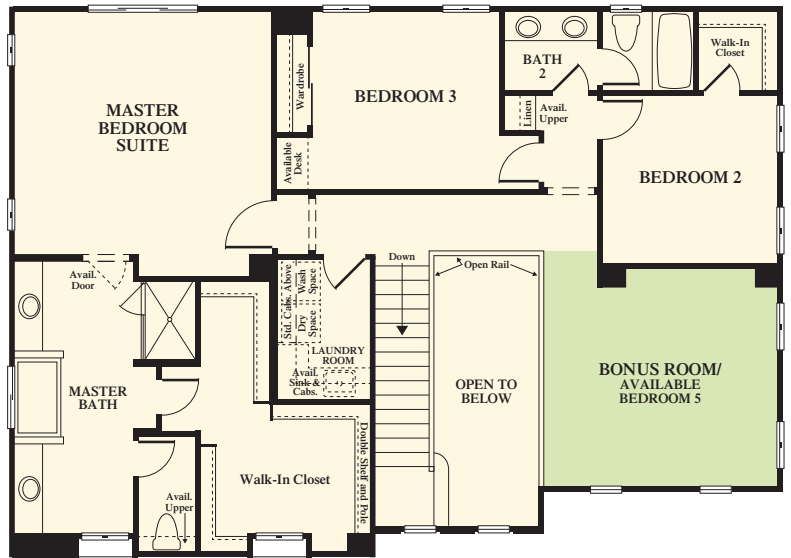
MODEL



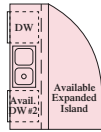
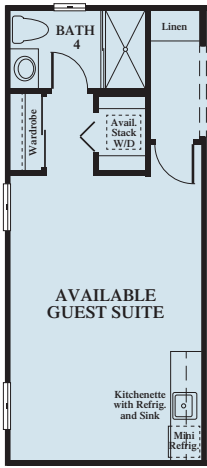
2BR EUROPEAN COTTAGE



2CR CRAFTSMAN



Second Floor



First Floor
Elevation AR

----Denotes available item in most instances. Windows, wall sizes and locations may vary per elevation and options selected. In the interest of continuing improvement, Van Daele Homes reserves the right to make modifications to floorplans and exterior elevations without notice or obligation. All artwork, renderings and floorplans are artist's conception and are not to scale. See Sales Counselors for details.

RESIDENCE THREE

Two Story
Five to Six Bedrooms
Four and One-Half to
Six and One-Half Baths
Covered Porch Entry
Great Room
Dining Room
Office/Imagination Room
California Room
Bonus Room
Three-Car Tandem Garage

Available Options:

- Fireplace at California Room
- Guest Suite with separate Bedroom, Living Room and Kitchenette
- Super Great Room
- Expanded Kitchen Island
- Bedroom Six with Bath Six
- Deck
- Expanded Bonus Room with Deck
- Sliding Glass Door Selections

INTERIOR LIVING SPACE

3,424 to 3,794 square feet*

OUTDOOR LIVING SPACE

271 to 519 square feet*



3AR SPANISH



3BR EUROPEAN COTTAGE

MODEL



3CR CRAFTSMAN



AMENITIES

Outstanding design, style and quality craftsmanship are proudly offered at Claiborne at Summerly...

DRAMATIC INTERIOR APPOINTMENTS

- Soaring 9 foot ceilings on the first floor
- Stunning staircases (per plan) with painted wood handrails and balusters
- All walls finished with light drywall texture and rounded bull nose corners
- Raised panel Roman style doors with upgraded brushed nickel hardware
- 12" x 12" Ceramic tile flooring in the Entry
- Convenient interior laundry rooms with overhead white thermofoil cabinetry
- Easy-care solid surface countertops
- Elegant Maple cabinetry with concealed hinges in Kitchen and Baths
- Decora light switches
- Pre-wired for Cat 5 and cable

AUTHENTIC EXTERIOR CHARM

- Inspired architectural designs include Spanish, European Cottage and Craftsman elevations
- Brick, stone, wood and exterior accents
- Covered front porches (per plan and elevation)
- Architecturally designed, color coordinated street scenes
- Decorative concrete tile roofs
- Concrete driveways and walkways
- Durable sectional steel roll up garage doors with R-9 vinyl insulation and an automatic door opener
- Distinctive 8 foot entry doors with Schlage® hardware
- Gas BBQ stub in rear yard

GOURMET KITCHENS

- Granite countertops with six inch backsplash
- Elegant Maple cabinetry with concealed hinges
- Whirlpool® stainless steel appliances including:
 - 30" Four burner gas range
 - Quiet wash dishwasher
 - Built-in microwave hood
- Double pressed stainless steel sink with Moen® pull-out faucet
- Recessed lighting
- Refrigerator area pre-plumbed for an icemaker

THOUGHTFULLY DETAILED MASTER BEDROOM SUITES

- Oversized walk-in closets
- Elegant Maple cabinetry with concealed hinges
- Easy-care solid surface counter tops
- Dual china sinks with Moen® faucets
- Large vanity mirrors and decorator selected lighting fixtures
- Sumptuous oversized soaking tubs and spacious separate showers

EFFICIENT BY DESIGN®

VAN DAELE HOMES' EFFICIENT BY DESIGN® IS INCLUDED IN YOUR NEW ENERGY-EFFICIENT HOME BECAUSE OF THE BENEFITS IT BRINGS TO YOU AND THE ENVIRONMENT.

- Tankless Water Heater
- Dual glazed, Low-E windows
- R-13 exterior wall insulation and R-38 in attic areas for efficient temperature control
- High efficiency central air conditioning with set back thermostat
- Economic gas forced air heating
- ENERGY STAR™ multi-cycle dishwasher
- Environmentally friendly engineered lumber products
- Low VOC interior wall and ceiling paint

Many home customization options are available through the Design Center; please refer to floorplan descriptions and illustrations. Please see your Sales Counselors for more details.

OUR STORY, OUR PROMISE UNLIKE ANY OTHER

Every company, every homebuilder, and just like you, every family has a story. We believe you will agree that since buying a home is one of the most important things you will ever do, it is essential that you know who you are buying it from.

Our story is different from most homebuilders. We are not a national, publicly held corporation led by a Wall Street management team living on the other side of the country. Instead, Van Daele Homes is a family owned home building company located in California. Our management team is comprised of Van Daele family members as well as some of the most respected and experienced homebuilding professionals in the industry. Together, since 1987, we have created exceptional new home communities for more than 15,000 families.

Because we take great pride in having our family name on your family's door, it is only natural that we care more deeply about your entire home purchase process. We are intimately involved every step of the way; from the land we buy and design of every detail in every home, to the superior Buyer Friendly attention we give you both before and after you move in. The Van Daele family team confidently makes this simple promise to you...You'll feel good about your new home®!

Sincerely,

The Van Daele Family





CLAIBORNE

AT SUMMERLY

29528 Village Parkway Loop
Lake Elsinore, CA 92530
(951) 376-1570

www.vandaele.com



Summerly

Van Daele, Van Daele Homes One Family. One Promise. and You'll feel good about your new home. are registered trademarks of Van Daele Development.
Square footages are based on an approximate dimension of the exterior of the home. Models used do not reflect any racial preference.

BRE# 00974168

